



**BEIJING** | COLLEGE OF  
UNIVERSITY OF INTERNATIONAL  
TECHNOLOGY EDUCATION

# NON-DEGREE PROGRAM

For International Students



Add.: No.100, Ping Le Yuan, Chaoyang District, Beijing, 100124, China

Website: <http://international.bjut.edu.cn>

Email: [beijingtech@bjut.edu.cn](mailto:beijingtech@bjut.edu.cn)

Tel.: 0086-10-67391858, 0086-10-67392472

<http://international.bjut.edu.cn>



# The University

- To build an **internationally** recognized research university of advanced level with its uniqueness
- Science, **Engineering**, Economics, Management, Literature, Law, Philosophy, Education and Art
- **#126** in 2013 QS Asian University Rankings, **#29** in 2013 QS Chinese Universities

Beijing University of Technology (BJUT) was founded in 1960. It is a key university under the administration of Beijing Municipal Government, which has established a multi-disciplinary academic structure offering various programs and involved in diversified academic research in fields of science, engineering, economics, management, literature, law, philosophy, education and art. In 1981, it was among one of the first universities authorized to confer master degrees by Ministry of Education, and in 1985 it was officially entitled to confer doctoral degrees. In December 1996, it was approved in national “211 project” evaluation and became one of national 100 key universities in the 21 century. In 2013 QS Asian University Rankings it was ranked #126 and #29 in Chinese Universities.

The university has 3 key national disciplines: Optical Engineering, Materials Science and Structural Engineering; 39 key disciplines of the Beijing Municipality, 18 first category doctoral degree programs, 71 second category doctoral degree programs, 31 category master’s degree programs, 139 second category master’s degree programs and 17 post-doctoral programs.

At present, BJUT has over 3,000 academic and administrative staff, among whom 1,500 are full-time academic staff, 6 full-time members of Chinese Academy of Engineering and Chinese Academy of Sciences and 262 supervisors of PhD candidates. The University has over 12,000 full-time undergraduate students, over 8,600 postgraduates and over 1000 international students from more than 75 countries, among whom more than 200 are degree seekers.





# College of International Education

College of International Education (CIE) aims at providing diverse learning environments and opportunities for students from a wide range of cultural backgrounds for their comprehensive studies of the changing world and the full realization of their academic and social potential. With a strong group of qualified, experienced and professional teachers, the College strives to foster all aspects of development of international students in China and the improvement of international awareness and competence of Chinese students.

## International Students

One of the university's strategies is to build an internationally recognized research university of advanced level with its uniqueness. We welcome students from all over the world to study at Beijing University of Technology. Each year around 1,000 students from outside China choose to study with us.

We provide the following services to our international students:

- Airport pick service and transportation information from the airport to the university
- Welcome programs and orientation
- Visa affairs
- Study and application
- Fees and scholarships
- Working during your studies
- International student unions
- Cultural activities

For more information, please visit our website  
<http://international.bjut.edu.cn>





## ENTRY REQUIREMENTS AND FEES



# ENTRY REQUIREMENTS AND FEES

BEIJING UNIVERSITY OF TECHNOLOGY

## > Entry requirements

1. Applicant must be a non-Chinese resident, holding a valid foreign passport or international identity certificate.
2. Applicant should be in good mental and physical condition.
3. Applicant should be over 18 years old.
4. Applicant should have sufficient financial capability for working and living in China.
5. \*EPIS program applicants should be senior undergraduate students or postgraduate students with science and engineering or relevantbackground.

## > School Dates

- Spring semester: February--July
  - Autumn semester: September—next January
- For exact dates, please refer to BJUT school calendar on our website  
<http://international.bjut.edu.cn>



## > Tuition Fee and Registration Fee

Program	Registration Fee (Yuan)	Tuition Fee (Yuan)
Chinese Language Training (CLT)	250	8300
The Contemporary Chinese Business and Culture (CCBC)	415	13300
Engineering Program for International Student (EPIS)	415	15000

\*Tuition and fees vary depending on the specific exchange agreement. Students should contact their study abroad office. Partners should contact their counterparts for specific details.  
Exchange students must be recommended by their home university so as to enjoy the favorable conditions for exchange students listed in the specific exchange agreement. The students who are not recommended by their home university shall be regarded as tuition-paying students.

# ENTRY REQUIREMENTS AND FEES

BEIJING UNIVERSITY OF TECHNOLOGY



> Living Expenses

Item	Cost	Standard	Remark
	Semester average		
Accommodation	¥5490	¥45/bed	Example: room D, exclusive of utilitues 122days
Meals	¥3660	¥30/day	On campus
Transportation	¥600	¥100/month	Public transport
Book and stationery	¥800		depending on your course,and if you buy new or second-hand
Clothes	¥1200	¥300	exclusive of luxurious items
Mobile	¥384	¥96/month	exclusive of international calls
Internet	¥60	¥15/15G/ month	University internet sevice
Other expenses	¥1680	¥420/month	e.g.entertainment,sport, photocopy,etc.
TOTAL	¥13874		

P.S.: This is an average living expenses for one semester (4 months/122 days). Actual expenses vary according to financial budget of each individual student.

> Way of Payment

1. Groups

Groups are welcome to remit all the fees to the university bank account before arrival.

Here is BJUT bank information:

Account Name	Beijing University of Technology
Account No.	0200003709089028526
Bank of Open Account	Industrial and Commercial Bank of China Guangqulu Branch Chao Yang District Beijing, China
SWIFT number	ICBKCNBJBJM

2. Individuals

For individual students, cash payment at university registration is preferred. Credit card payment is possible, however procedure fee may be charged by bank.







**PROGRAM  
APPLICATION**



# PROGRAM APPLICATION

BEIJING UNIVERSITY OF TECHNOLOGY

## > Application procedure

### 1. Application submission

- To complete an online application at [www.studyatbjut.com](http://www.studyatbjut.com) and submit required documents
- To pay application fee online

### 2. First week since submission

College of international Education (CIE) will review the application and return the application which fails to meet the requirement. Incomplete applications will be returned for re-apply.

### 3. Second week since submission: admission notice

CIE will prepare *Admission Notice* and *Visa Application for Foreigners* (JW202). The *Visa Application for Foreigners* (JW202) will be submitted to Beijing Government for approval and will be returned within 10 working days.

### 4. Fourth week since submission

CIE will send the *Admission Notice*, *Visa Application for Foreigners* (JW202) via registered international post to the address filled in the application form or to the applicant's home university address (for exchange students).

### 5. 1-2 months before school starts

Applicant should apply for X2 visa in local Chinese embassy or consulate with the *Admission Notice*, *Visa Application for Foreigners* (JW202).

### 6. First week of school: university registration

Applicant should bring the *Admission Notice* or copy and other documents to registrate at the university in required period of time.

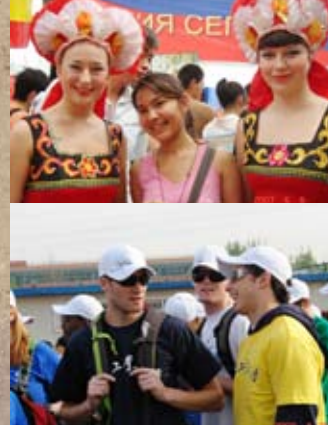
Online application: <http://international.bjut.edu.cn>

### Application period

- Spring semester: 15<sup>th</sup> September—31<sup>st</sup> December
- Autumn semester: 1<sup>st</sup> March—15<sup>th</sup> July

### Application documents

- Application form (completed online)
- A copy of passport personal information page
- A copy of Physical Examination Record for Foreigners (if available)







## CHINESE LANGUAGE TRAINING (CLT)





# Chinese Language Training (CLT)

BEIJING UNIVERSITY OF TECHNOLOGY

> Language of Instruction: Chinese and English

> Courses Introduction

There are courses of 5 grades for 3 levels available namely preliminary level, intermediate level and senior level. Preliminary level includes grade 1, grade 2. Intermediate level includes grade 3 and grade 4. Senior level includes grade 5. Courses include compulsory courses and elective courses. Comprehensive and Spoken Chinese are Compulsory courses. Elective courses include Chinese Listening, Phonetic Training, Chinese Reading, Chinese News Reading, Business Chinese, Chinese Traditional Calligraphy and Painting, Taiji Practice, Cultural Experience and the Chinese Proficiency Test (HSK) Guidance.

> Courses Requirement

Those who get 20 credits can get a certificate at the end of the semester.  
The university’s academic year includes 2 terms, and the teaching period for each term lasts about 19 weeks. The general score is made up of the scores of mid-term examination, final examination and comprehensive evaluation.

> Compulsory Courses

Level	Grade	Course	Credit
Preliminary	1	Comprehensive	10
		Spoken	6
	2	Comprehensive	10
		Spoken	6
Intermediate	3	Comprehensive	8
		Spoken	6
	4	Comprehensive	8
		Spoken	6
Senior	5	Comprehensive	8
		Spoken	6

> Elective Courses

	Course Name	Grade	Credit
1	Elementary Chinese Listening 1	Grade 1	4
2	Elementary Chinese Listening 2	Grade 2	4
3	Phonetic Training	Grade 1,2	2
4	Intermediate Chinese Listening 1	Grade 3,4	4
5	Intermediate Chinese Listening 2	Grade 4,5	4
6	Intermediate Chinese Reading	Grade 3,4	2
7	Chinese News Reading	Grade 4,5	2
8	Watching and Talking	Grade 4,5	2
9	Intensive Course for HSK 4	Grade 2,3	1
10	Intensive Course for HSK 5	Grade3,4,5	1
11	Business Chinese	Grade 3,4	4
12	Chinese Traditional Calligraphy and Painting	All	1
13	Taiji Practice	All	1
14	Cultural Experience Course	All	3





## ➤ Teaching Objectives

### Grade 1

Students are expected to grasp the rules of initials, vowels, tones, tone sandhi, neutral tone, retroflex ending, 700 Chinese words and the related characters which almost cover all the basic and daily use, 70 preliminary-level grammatical items, and all the basic strokes of Chinese characters and their writing order. Listening practice proceeds from words, phrases, and sentences to short dialogues. Oral practice focuses on simple daily expressions. Students will learn to read short passages of no more than 200 words and to write paragraphs by linking up given sentences.

### Grade 2

This phase focuses on correcting students' pronunciation. Practice on stress, pause and varieties of intonation in sentence is initiated. Students are expected to acquire 700 words and related characters and grasp 76 grammatical items of the preliminary level. Listening practice includes dialogue and short passage of no more than 400 words. Oral practice focuses on short conversations and expressions. Students will learn to read 300-word articles and understand the short passage with about 5% new words. Writing practice stresses simple narration and practical writings such as a letter.

### Grade 3

Students will be able to master a correct pronunciation and intonation. Vocabulary amounts for this phase to 650 and 70 grammar items as well. On this basis, they are expected to be able to understand in listening to language materials with no more than 2% new words and without new grammatical points, to converse in full expression in their daily social contact, to grasp the general idea of articles and to make their points clear in their practical writings and narrations with around 300 words.

### Grade 4

Students at this level will continue to enlarge their vocabulary by studying about 750 words and the corresponding characters and about 77 grammatical items in using and comparing words. Semantic analysis, usage analysis and pragmatic analysis of the language structure will be included. Reading assignment will be increased significantly. Listening and speaking on general topics will be further strengthened in order that students will be able to make full expressions and to take down key notes in listening. Writing practice focuses on the organization of full sentences and paragraphs and the abilities of retelling and reporting as well. As a result, students will be able to write 400-word articles to express their main ideas.

### Grade 5

At this level, students will continue to learn about 630 words and the corresponding characters as well as 75 grammatical items in using and comparing words. Semantic analysis, usage analysis and pragmatic analysis of the language structure is further enhanced. Students are required to expand their reading scope, try to make key points in their listening comprehension on longer passages and try to read and listen to the daily news. They are expected to write compositions with given topics. Seminars are held to help students improve the ability to express ideas in complete form.







# THE CONTEMPORARY CHINESE BUSINESS AND CULTURE (CCBC)



# The Contemporary Chinese Business and Culture (CCBC)

BEIJING UNIVERSITY OF TECHNOLOGY

## > Program Structure

### Program Rationale

Tailored to the needs of students interested in China’s economics and business culture from other countries, the program is designed to present a picture of current China’s economic and social life to those who intend to do business in China.

### Program Structure

The program consists of two sections with six courses:

#### Section 1: Mandarin Courses

- Course 1: Chinese Grammar
- Course 2: Oral mandarin

#### Section 2: Business Courses

- Course 1: The Business Environment in China
- Course 2: The Legal Dimensions of the Chinese Business World
- Course 3: The Business Management in China
- Course 4: The Chinese Business Culture

## > Course Description and Course Outlines

### Section 1 Mandarin (256 hours)

Chinese grammar (128 hours): Basic techniques of writing and reading Chinese language.  
Oral mandarin (128 hours): Daily used words and expressions for survival in China.

### Section 2 Business Courses (128 hours)

#### Course 1: The Business Environment in China

This course introduces the political, social, economic, cultural and historical factors which influence the manner in which business is conducted within the People’s Republic of China. The impact of Maoist and Dengist policies are discussed. Greatest emphasis is placed on the contemporary developments and changes in China’s business practices.

#### Course 2: Legal Dimensions of the Chinese Business World

This course is aimed at business people who need to understand the legal context for doing business in the People’s Republic of China. The course deals with relevant legal institutions and substantive law, with an emphasis on commercial law matters.



### Course 3: The Business Management in China

This is an executive-level management course illustrated by examples specific to mainland China. The topics are related to the concept of the business environment and national culture as one factor in that environment, how culture influences the company’s internal arrangements, how culture and the internal arrangement influence the company’s priorities in strategic planning and its needs for control in international relationship in the WTO context and the operation of financial accounting system in China.

### Course 4: The Chinese Business Culture

This course includes 3 modules, focusing on China’s business history and the influence of traditional philosophy, the differences between Chinese and western business cultures and strategic choices for foreign business professionals trying to make a fortune in China.

### Section 3 Study Tours

During this semester, two study tours are scheduled. One is to visit Yanjing Beer Co. The other is to visit Hancun village, a newly developed rural economy.

## > Assessment

The award of Training Program Certificate is made on successful completion of the courses and open examinations with a satisfactory attendance record.





# The Contemporary Chinese Business and Culture (CCBC)

BEIJING UNIVERSITY OF TECHNOLOGY

## > Business Courses Design

### Course 1: The Business Environment in China ( 32 hrs)

This course introduces the political, social, economic, cultural and historical factors which influence the manner in which business is conducted within the People’s Republic of China. The impact of Maoist and Dengist policies are discussed. Greatest emphasis is placed on the contemporary developments and changes in China’s business practices.

Module	Code	Lecture Title	Credit hour
BE1	BE11	An overview of the development of China’s economy	4
	BE12	The Evolution of China’s economic policy	8
BE2	BE21	The industrial structure analysis	4
	BE22	The agriculture structure analysis	4
	BE23	The service industry in China	4
	BE24	The Chinese Corroperation's mergers and acquisitions	4
BE3	BE31	The environment protection in China	4
TOTAL			32



### Course 2: The Business Management in China (32 hrs)

This is an executive-level management course illustrated by examples specific to China. It includes four modules focusing on comparative management and differences in China’s business practices. The aim is to present to the students the generic function of China’s business management in the context of Chinese business culture. Guest speakers may be invited to talk about the current political affairs.

Module	Code	Lecture Title	Credit hour
BM1	BM11	Evolution of business management in China	4
	BM12	Comparison and contrast between oriental enterprises and western enterprises	4
BM2	BM21	Management in state-owned enterprises, private and collective enterprises	4
	BM23	Chinese trading practices	4
	BM24	Environment protection & trade	4
BM3	BM31	Corporate governance in China	4
	BM32	How to communicate with Chinese	8
TOTAL			32



# The Contemporary Chinese Business and Culture (CCBC)

BEIJING UNIVERSITY OF TECHNOLOGY

## Course 3: Legal Dimensions of the Chinese Business World (32 hrs)

This course is aimed at business people who need to understand the legal context for doing business in the People’s Republic of China. The course deals with relevant legal institutions and substantive laws, with an emphasis on commercial law matters. Topics ordinarily include constitutional law and government structure, sources of law, and foreign investment law, taxation, relevant aspects of China’s trading regulations.

Module	Code	Lecture Title	Credit hour
LD1	LD11	The legislative system and government structure of China	4
	LD12	The judicial system and procedure laws of China & Simulated exercise	8
LD2	LD21	Foreign investment laws of China	2
	LD23	The practices of intellectual property rights in China	4
	LD24	WTO & China’s trading regulations	8
LD3	LD32	Chinese market economy & its legal foundation	6
TOTAL			32



## Course 4: The Chinese Business Culture ( 30 hrs)

This course includes 3 modules, focusing on China’s business history and the influence of traditional philosophy, the differences between Chinese and western business cultures and strategic choices for foreign business professionals trying to make a fortune in China.

Module	Code	Lecture Title	Credit hour
BC1	BC11	The feature analysis on the Chinese business history	4
	BC12	The traditional philosophy: Confucianism and Taoism	4
BC2	BC21	Comparative study of Chinese and western business culture	6
	BC22	How to do business in China	4
	BC23	Strategic choices and business culture case study	6
BC3	BC31	Exercise: Chinese calligraphy	2
BC4	BC41	Comments on Current Political Affairs	4
TOTAL			32







**ENGINEERING PROGRAM  
FOR INTERNATIONAL  
STUDENTS (EPIS)**



# Engineering Program for International Students (EPIS)

BEIJING UNIVERSITY OF TECHNOLOGY

## > Language of Instruction: English

## > Introduction

This program offers opportunities to all international students with science or engineering background, or any background related, to do scientific researches, take part in scientific project learning by way of practice and experience Chinese culture. The program includes research or practical projects with emphasis on training students’ abilities of engineering practice, innovation and intercultural exchanges and cooperation.

The program consists of four modules: engineering or research projects; lectures of engineering and culture; Chinese language learning and Chinese culture experience. It is a one-semester English-taught program with 30 European credits. Upon successfully completing the program, students are issued a program completion certificate from Beijing University of Technology.

## > Course modules

### Module 1: Engineering or research projects (256 hours, 16 credits)

In this module, students are supposed to conduct projects supervised by professors or assistant professors in the fields related. The project can be a new one; a continued one brought by the student from his/her home country, or Chinese students’ ongoing project.

The module involves team work with Chinese students.

Assessment: A complete project will be assessed by the supervisor at end of the semester.

### Module 2: Engineering and cultural lectures (48 hours, 3 credits)

This module offers a series of English lectures or seminars, including Introduction of Chinese Engineering, Engineering Knowledge and Ability, China’s Economy, Chinese Culture, etc.

Assessment: A report or thesis on a subject introduced in the lectures of seminars is required to be submitted by end of the semester. The report or thesis will be evaluated by the lecturers.

### Module 3: Chinese language (144 hours, 8 credits)

This module is designed to help students live in China, get a practical experience of the language, and experience the country. Also, it helps students lay a Chinese language foundation for students who expect a further development in China in the future. The module provides



spoken language training including everyday life expressions, introduction of Chinese characters, and basic Chinese grammar. Students will learn about 350 characters and all the sounds, tones and intonation of the language, and will be able to have daily communications using the words and sentences they have learned.

Assessment: Examination takes place at end of the semester.

### Module 4: Chinese culture experience (3 credits)

This module provides a practical experience outside the classroom. Students will visit places of interest and museums in Beijing city, enjoy some cultural performances and experience traditional culture.

There is no assessment for this module.

## > Transcripts and credit transfer

a.BJUT will issue a transcript and a certificate to the EPIS student upon successful completion.

b.Recognition of credit transfer will be under the authority of the students’ home institutions on the basis of mutual agreement between BJUT and the students’ home institutions. (for exchange students ONLY)







**ACCOMMODATION**

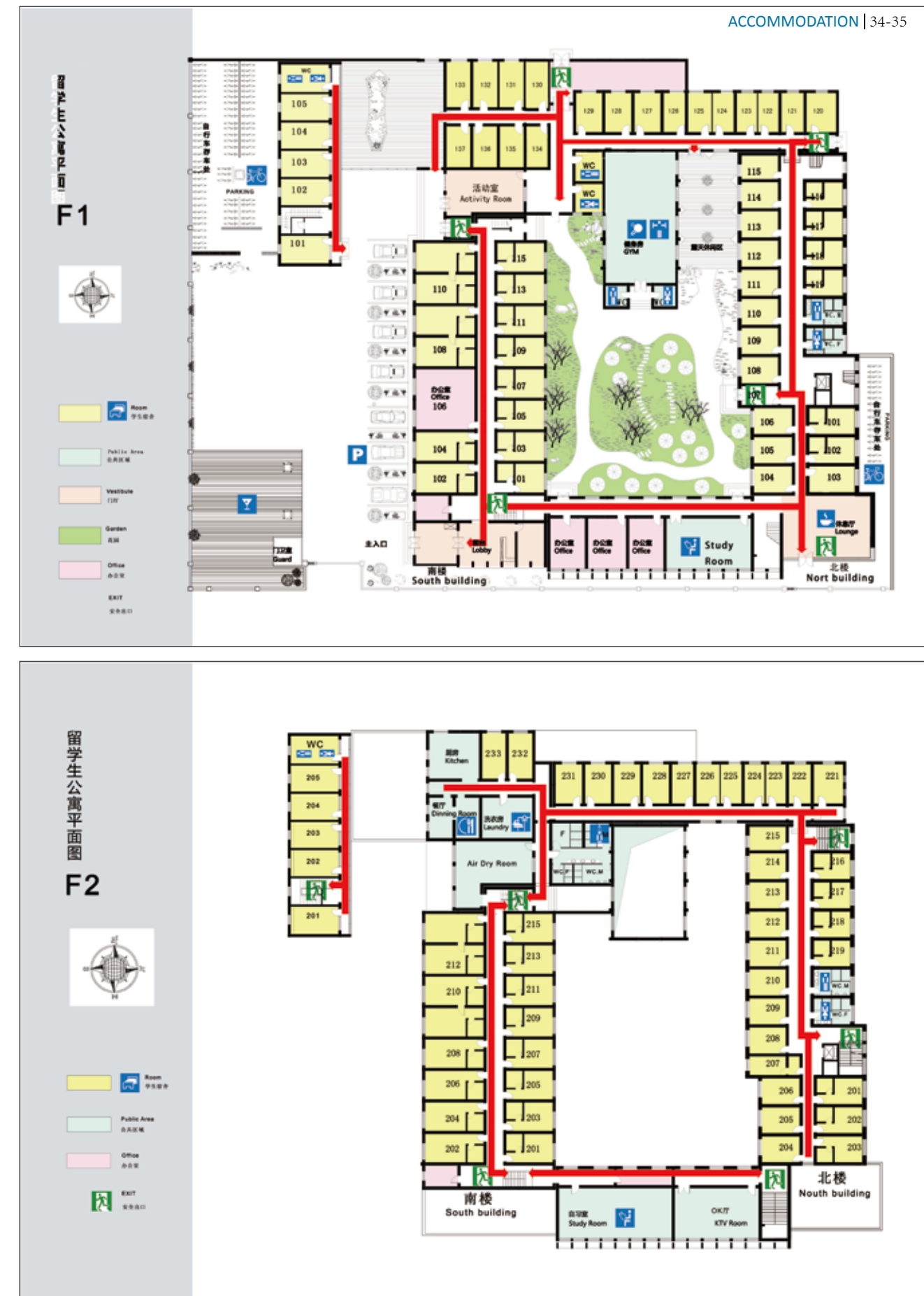


## BEIJING UNIVERSITY OF TECHNOLOGY

The international student dormitory locates opposite to the university's west entrance, which is 3-minute away by walk. The dormitory provides self-catered accommodation, large and small single rooms, double rooms and triple rooms, some of which are en-suite. Altogether there are 189 rooms accommodating 363 students. If you are not good at cooking, don't worry, because you will have plenty of choices from student dining halls on campus.

According to Chinese laws and regulations,international student dormitory only opens to the university's registered international students. Friends and families of the students during their visit are recommended to stay in the university hotel or other hotels in the neighborhood. Dormitory residents must follow related regulations.

Accommodation Office  
Tel: 0086-10-67391857  
Email: huqm@bjut.edu.cn  
<http://international.bjut.edu.cn>





# ACCOMMODATION

BEIJING UNIVERSITY OF TECHNOLOGY

Beijing University of Technology has provided a nurturing and flexible community welcoming all international students. The International Student Dormitory staff are friendly, accommodating, safety conscious and are always glad to help. There are many amenities that are provided such as fridges available per floor, full use of a kitchen, laundry facility, drying room, options of a private bathroom, cleaning service, usage of party rooms, a beautiful courtyard to relax, and a fitness center just to name a few. The proximity of the campus, grocery store, restaurants and other shops are just a short stroll from the dormitory premise.

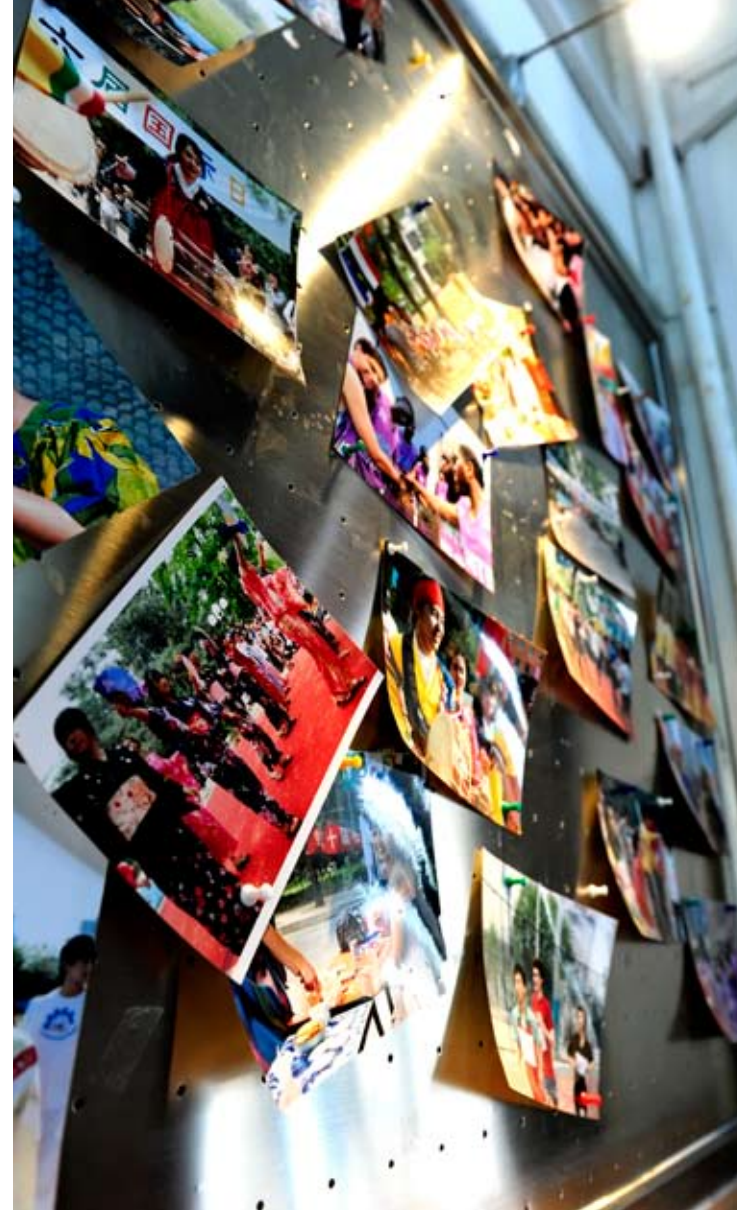
The environment created by BJUT for international students supports an ideal environment for a positive interactive learning experience.

When I first arrived to BJUT International dormitory, I was skeptical as to whether I would be capable of communicating my ideas to the native speakers. At first it was extremely difficult to express my ideas. Fortunately, thanks to the patience, understanding, and assistance of all the staff, my stay has been extremely nice and very accommodating. The staff will go well beyond the description of their duties to assist me. It has also been a great opportunity for me to meet many other international students from around the world.

The lifestyle of a student at this dorm is very flexible, which allows explorers to enjoy the nightlife of Beijing and travel at one's own convenience. There are many activities organized by The International Office of BJUT, as well as by other BJUT students, which are advertised on several notice boards throughout the dormitory.

It has been a great experience for me to stay at The International Student Dormitory of Beijing University of Technology. I have had the opportunity to join a local club, participate and provide ideas of creating an approved association, performed several times at different events offered by both local students as well as the International office, etc. Most importantly I was able to gain memorable experiences with the new friends and people I have met not to mention the exceptionally great staff.







----Francoise CHENG, American, Chinese language and training program student





# Room Rates for International Student Dormitory

BEIJING UNIVERSITY OF TECHNOLOGY

Room types	Max	Room info	No. of rooms		
				For non-degree students	
				(122-day contract or longer)	(less than 122 days)
E1		16m <sup>2</sup> Shared toilet	102	¥ 30/day/bed	¥ 50/day/bed
E2		16m <sup>2</sup> Shared toilet One queen-sized bed	7	¥ 55/day/bed	¥ 95/day/room
D		16m <sup>2</sup> Private toilet	28	¥ 45/day/bed	¥ 60/day/bed
*B1		20m <sup>2</sup> Private toilet	43	¥ 60/day/bed	¥ 75/day/bed
*B2		20m <sup>2</sup> Private toilet	6	¥ 110/day/room	¥ 140/day/room
*A		40m2 Private toilet	3	¥ 180/day/room	¥ 210/day/room

\*Room service is offered every two days in room type A, B .





**CAMPUS LIFE**



# Campus Life

BEIJING UNIVERSITY OF TECHNOLOGY

## > Visa

All foreigners staying in China should apply for visa and residence permit according to Chinese laws. The university will help students to apply for X2 visa (student visa).

Summer/Winter program students should apply for L visa.

For more detailed information of visa application, please visit our website  
<http://international.bjut.edu.cn>

## > Dining halls

There are 9 dining halls including a Muslim dining hall and cafeteria on campus offering a large variety of Chinese cuisines.

## > Hospital

University hospital is located in the southeast corner of campus. It is a community hospital and has Dept. of Internal Medicine, Surgery, Dept. of Gynecology, ENT, Dept. of Ophthalmology, Dept. of Stomatology, Dept. of Prevention and Health Care, Dept. of Chinese Medicine Massage, Radiology Dept., ECG Lab, Ultrasonic Dept. etc. It has over 50 beds and provides 24 hours emergency service. It also provides vaccination for infectious disease prevention and health consultation.

## > Insurance

All international students are required to buy insurance during study in China. The insurance cost is 300yuan/half year and 600yuan/year. It can be purchased at university registration.

## > Cultural activities

Each semester, the university organizes free trips to Forbidden City, Great Wall, Summer Palace and Temple of Heaven. Besides, we take students to watch Peking Operas and Acrobatics.





# International Student Union

BEIJING UNIVERSITY OF TECHNOLOGY



## > Vietnam Students Union

The BJUT Vietnam International Students Union was authorized by Beijing Vietnam International Students Union which constitutes with 31 Vietnam international students in 2013 from different subjects. We offer the entire Vietnam international students a warm home to help them in life and study in the BJUT.

The Vietnam students union exists to represent and dedicate to enhance the communication of Vietnam students studying in the BJUT. It aims to inspire more understanding between Vietnam students and other international students and to wholeheartedly serve for all the Vietnam international students. Additionally, our union would like to bring together students and to enrich more entertainments and facilities for their extracurricular activities. We are proud to guild and conduct all the Vietnam students for their further development in terms of self-management and self-education.

We are still young for certain, however, we would like to endeavor all our strength to serve for all the Vietnam students studying in Beijing University of Technology. We genuinely welcome you to join us. You will make new friends here, and hence feeling the great happiness just like being home.



## > Korean Students Union

Beijing University of Technology Korean International Student Association (BJUTKISA) was established in September 2011. It is mainly consist of Korean bachelor degree students.

The goal of the association is to help international students to communicate with each other, to strengthen international cooperation between Beijing University of Technology and Korean universities, and to help Korean students with difficulties or problems in their study and living.

We do our best to make contribution to the local community and raise the international image of Korea.



## > African Student Union

The African Student Union of Beijing University of Technology was established in March 2009 where there were only 30 members. Now we have 59 African students in the union.

only help Africans, but all students who need help. Although we speak different languages, have different cultures, we will do everything we can to help you.

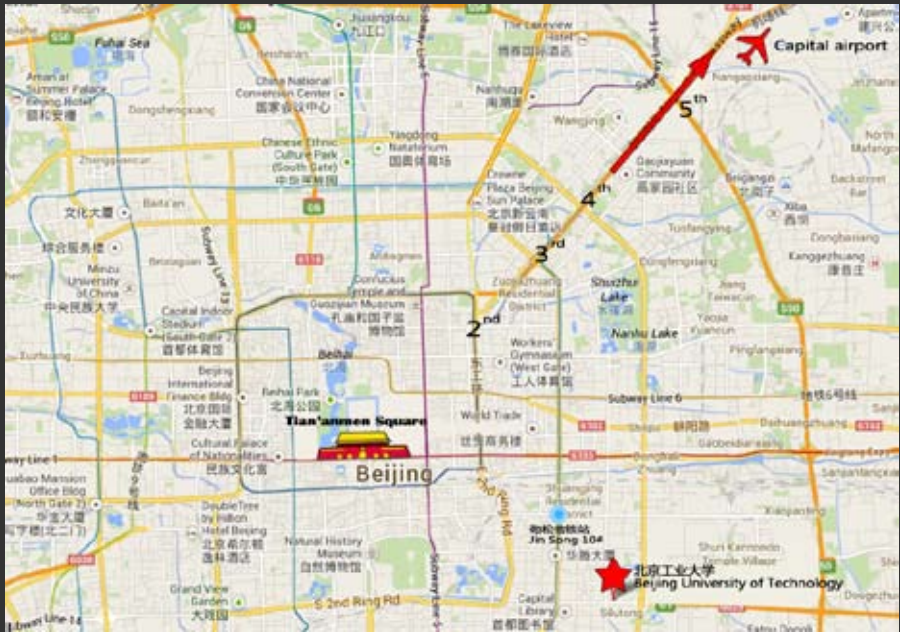
You are Welcome to join us!

The union is like a home for us at Beijing University of Technology. We not





# How to find us



Beijing, the capital of China, is an international mega-city with a population of over 20,000,000. It is not easy, even for locals, to quickly locate a place. But if you know the city's road structure, you will have a better idea.

Starting from Tian'anmen Square, the city's geographic and China's political center, the city is expanded out to 2nd, 3rd, 4th, 5th, and 6th ring roads. Beijing University of Technology is located between the 3rd and 4th ring road, southeast of Beijing. The university is 30km away from the capital airport, 10 km away from Tiananmen Square, 3km away from the nearest subway station (Jinsong station, line 10). In 2015, Beijing University of Technology station of subway line 14 will be put into use.

